



Shank 2 Polyclonal Antibody

Catalog No	YP-Ab-12806
Isotype	IgG
Reactivity	Human;Rat;Mouse;
Applications	WB;IHC
Gene Name	SHANK2
Protein Name	SH3 and multiple ankyrin repeat domains protein 2
Immunogen	The antiserum was produced against synthesized peptide derived from human SHANK2. AA range:331-380
Specificity	Shank 2 Polyclonal Antibody detects endogenous levels of Shank 2 protein.
Formulation	Liquid in PBS containing 50% glycerol, 0.5% BSA and 0.02% sodium azide.
Source	Polyclonal, Rabbit,IgG
Purification	The antibody was affinity-purified from rabbit antiserum by affinity-chromatography using epitope-specific immunogen.
Dilution	WB 1:500-2000;IHC-p 1:50-300
Concentration	1 mg/ml
Purity	≥90%
Storage Stability	-20°C/1 year
Synonyms	SHANK2; CORTBP1; KIAA1022; SH3 and multiple ankyrin repeat domains protein 2; Shank2; Cortactin-binding protein 1; CortBP1; Proline-rich synapse-associated protein 1
Observed Band	135kD
Cell Pathway	Apical cell membrane . Cytoplasm . Cell junction, synapse . Cell junction, synapse, postsynaptic density . Cell projection, growth cone . Cell projection, dendritic spine . Colocalizes with cortactin in growth cones in differentiating hippocampal neurons. Colocalized with PDE4D to the apical membrane of colonic crypt cells (By similarity). .
Tissue Specificity	Isoform 3 is present in epithelial colonic cells (at protein level).
Function	alternative products:Additional isoforms seem to exist,domain:The PDZ domain is required for interaction with GRID2, PLCB3, CFTR and SLC9A3.,function:Seems to be an adapter protein in the postsynaptic density (PSD) of excitatory synapses that interconnects receptors of the postsynaptic membrane including NMDA-type and metabotropic glutamate receptors, and the actin-based cytoskeleton. May play a role in the structural and functional organization of the dendritic spine and synaptic junction.,similarity:Belongs to the SHANK family.,similarity:Contains 1 PDZ (DHR) domain.,similarity:Contains 1 SAM (sterile alpha motif) domain.,subcellular location:Cytoplasm, postsynaptic density of neuronal cells.,subunit:Interacts with CCTN/cortactin SH3 domain, DLGAP1/GKAP and

alpha-latrotoxin receptor 1. Is part of a complex with DLG4/PSD-95 and DLGAP1/GKAP. Interacts with GRID2, SLC9A3, CFTR and PLCB3.

Background

This gene encodes a protein that is a member of the Shank family of synaptic proteins that may function as molecular scaffolds in the postsynaptic density of excitatory synapses. Shank proteins contain multiple domains for protein-protein interaction, including ankyrin repeats, and an SH3 domain. This particular family member contains a PDZ domain, a consensus sequence for cortactin SH3 domain-binding peptides and a sterile alpha motif. The alternative splicing demonstrated in Shank genes has been suggested as a mechanism for regulating the molecular structure of Shank and the spectrum of Shank-interacting proteins in the postsynaptic densities of the adult and developing brain. Alterations in the encoded protein may be associated with susceptibility to autism spectrum disorder. Alternative splicing results in multiple transcript variants. [provided by RefSeq, Feb 2014],

matters needing attention

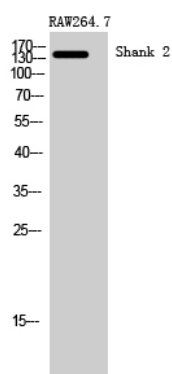
Avoid repeated freezing and thawing!

Usage suggestions

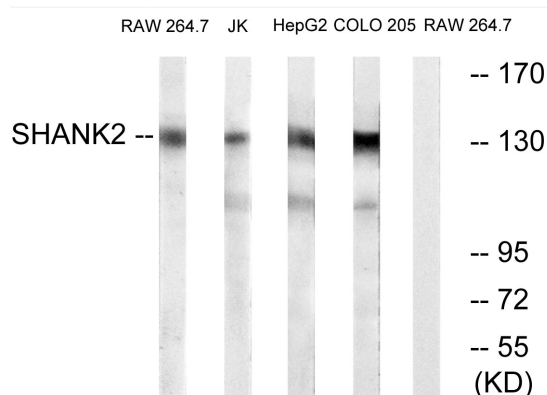
This product can be used in immunological reaction related experiments. For more information, please consult technical personnel.



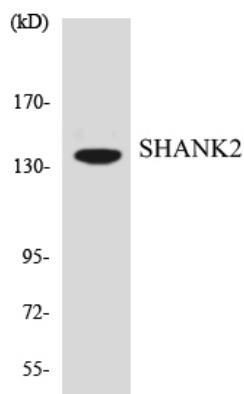
Products Images



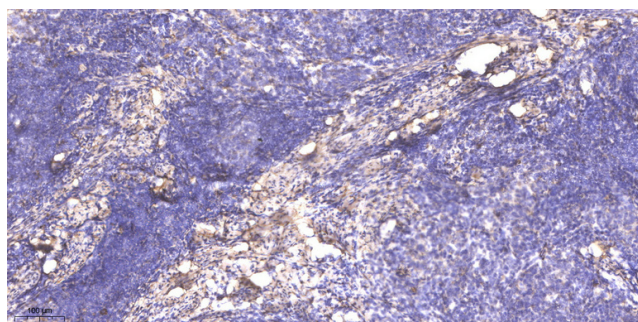
Western Blot analysis of RAW264.7 cells using Shank 2 Polyclonal Antibody



Western blot analysis of lysates from RAW264.7, Jurkat, HepG2, and COLO cells, using SHANK2 Antibody. The lane on the right is blocked with the synthesized peptide.



Western blot analysis of the lysates from HT-29 cells using SHANK2 antibody.



Immunohistochemical analysis of paraffin-embedded human cervical carcinoma. 1, Antibody was diluted at 1:200(4° overnight). 2, Tris-EDTA,pH9.0 was used for antigen retrieval. 3,Secondary antibody was diluted at 1:200(room temperature, 45min).